



Active
Travel
England

Local Priorities, Delivered Locally

How national walking, wheeling and cycling data helps authorities deliver for local communities



England's mayors pledge national walking, wheeling and cycling network



Designing Active Places through Local Plans and Spatial Development Strategies



Designing Active Places through Local Plans and Spatial Development Strategies

I'm looking for guidance on...



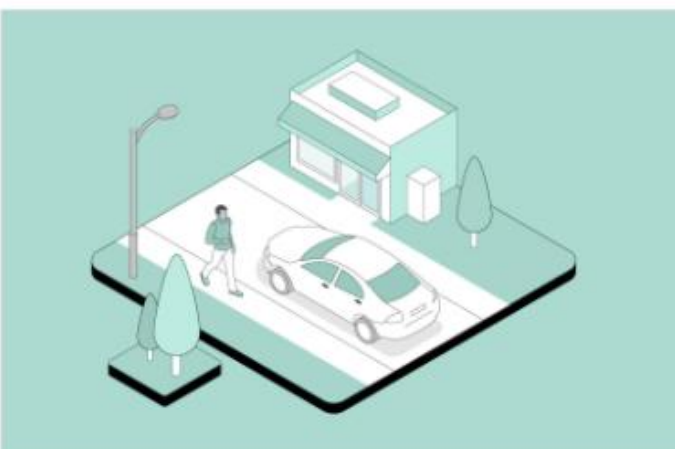
Traffic-free paths

Guidance on active travel paths that are free from motorised traffic



Residential

Guidance on active travel features on streets that mainly serve residential properties



Low volume streets

Guidance on active travel features on streets with lower volumes of motorised traffic

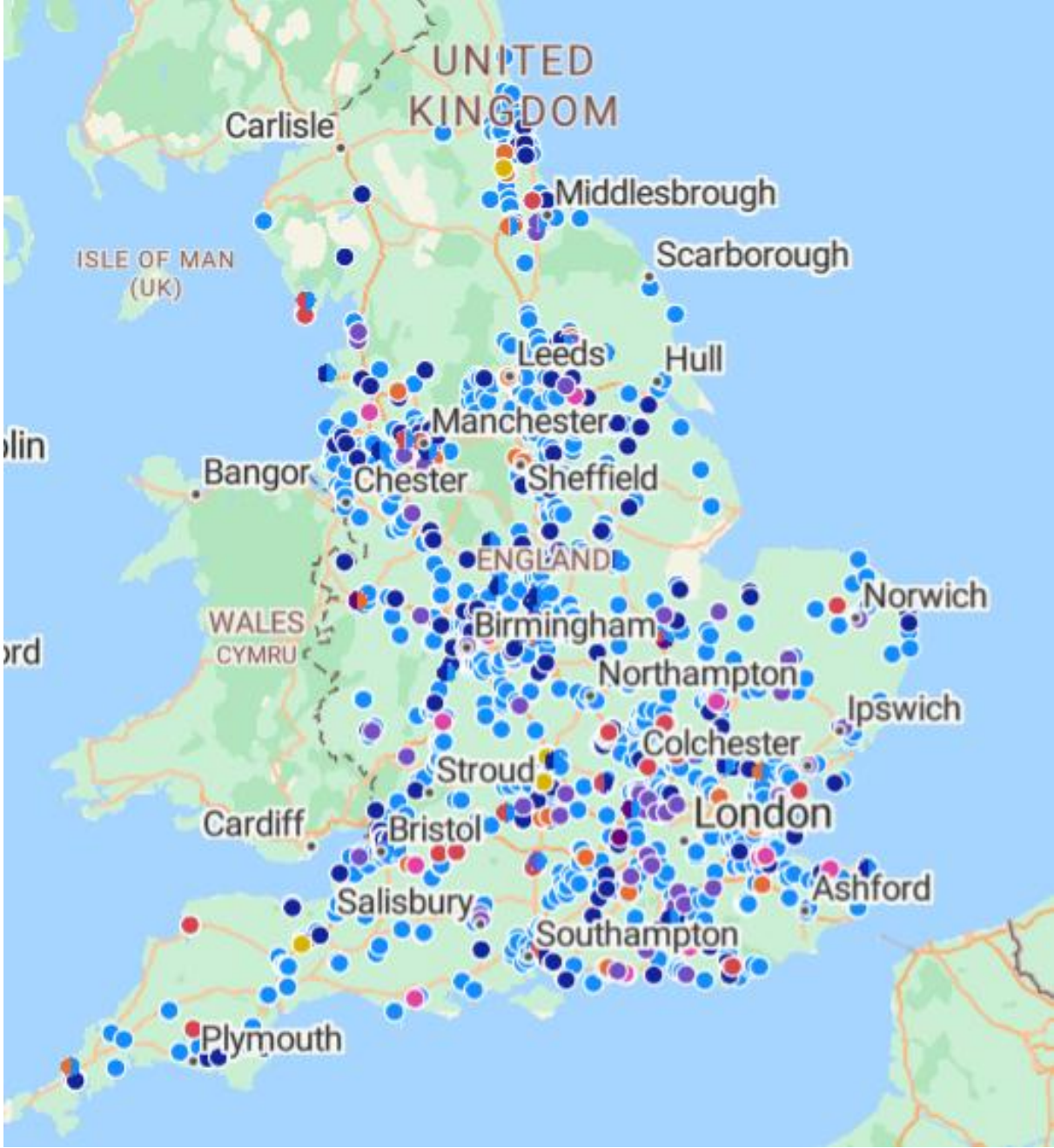


High volume streets

Guidance on active travel features on streets with high volumes of motorised traffic

Site-wide considerations

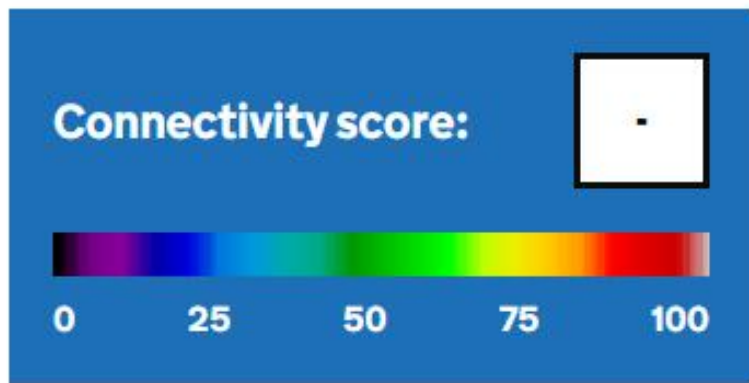
Guidance on how to plan and design active places at a site-wide level



- LPA Status**
- Approved Subject to Conditions
 - Approved Subject to Conditions + Obligations
 - Granted
 - Non-Determination
 - Refused
 - Split Decision
 - Withdrawn

[Back](#)

Beta This is a new service – [your feedback \(opens in new tab\)](#) will help us to improve it.



[Hide](#)

Filter the data shown in the connectivity score map

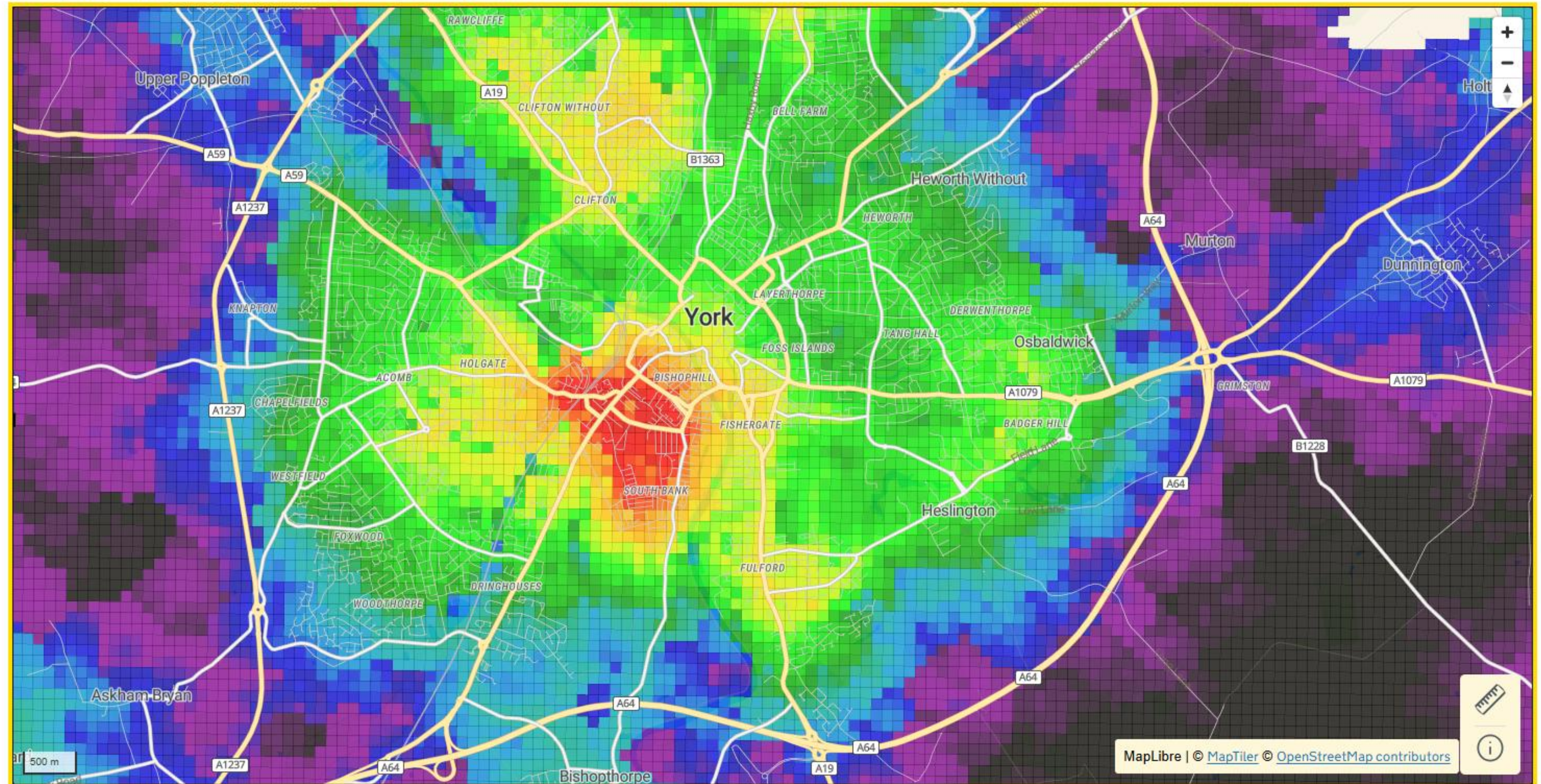
Show local authority view

Show authority band

[What is a local authority band?](#)

Score by destination

Score by mode of transport

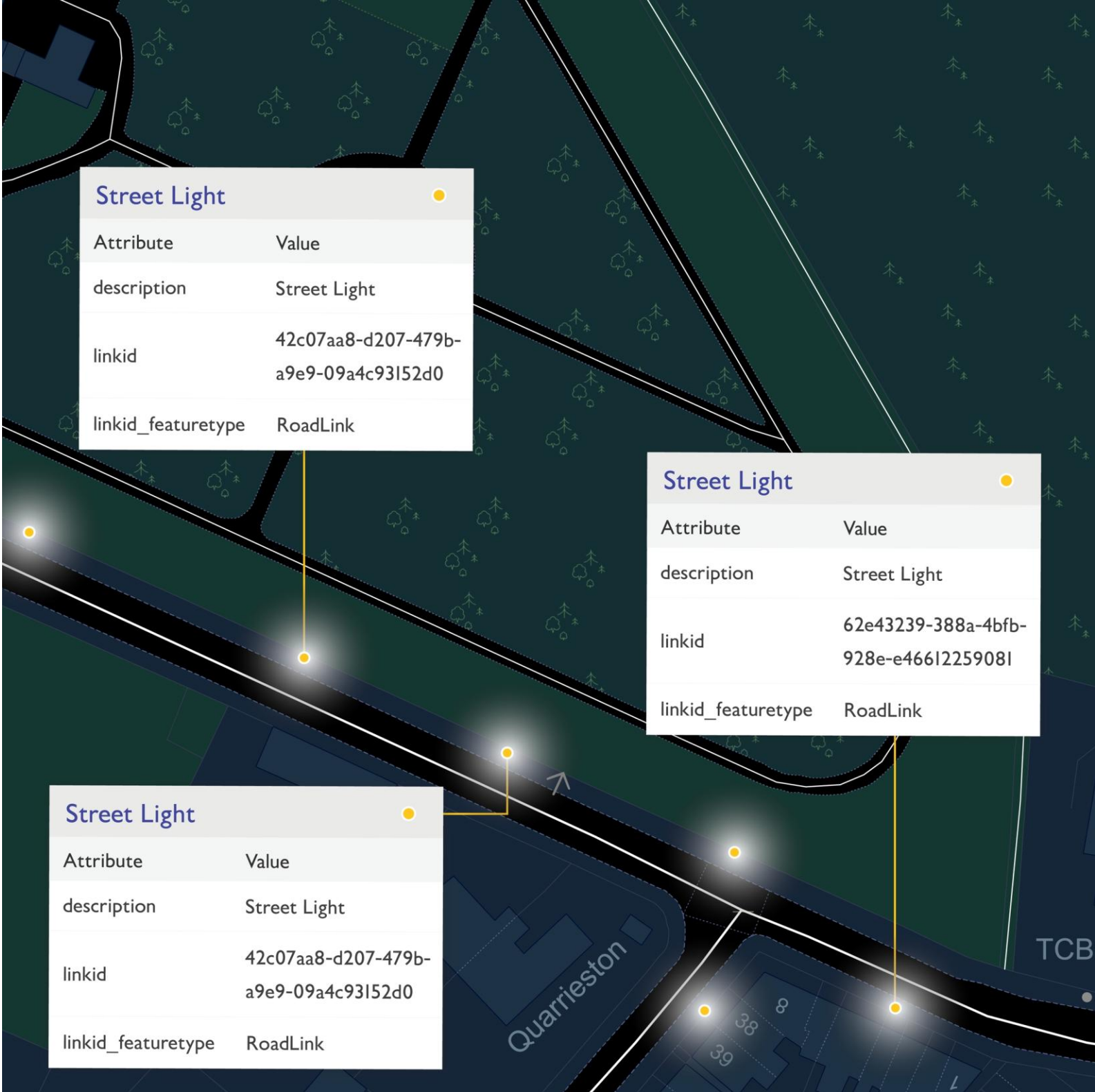
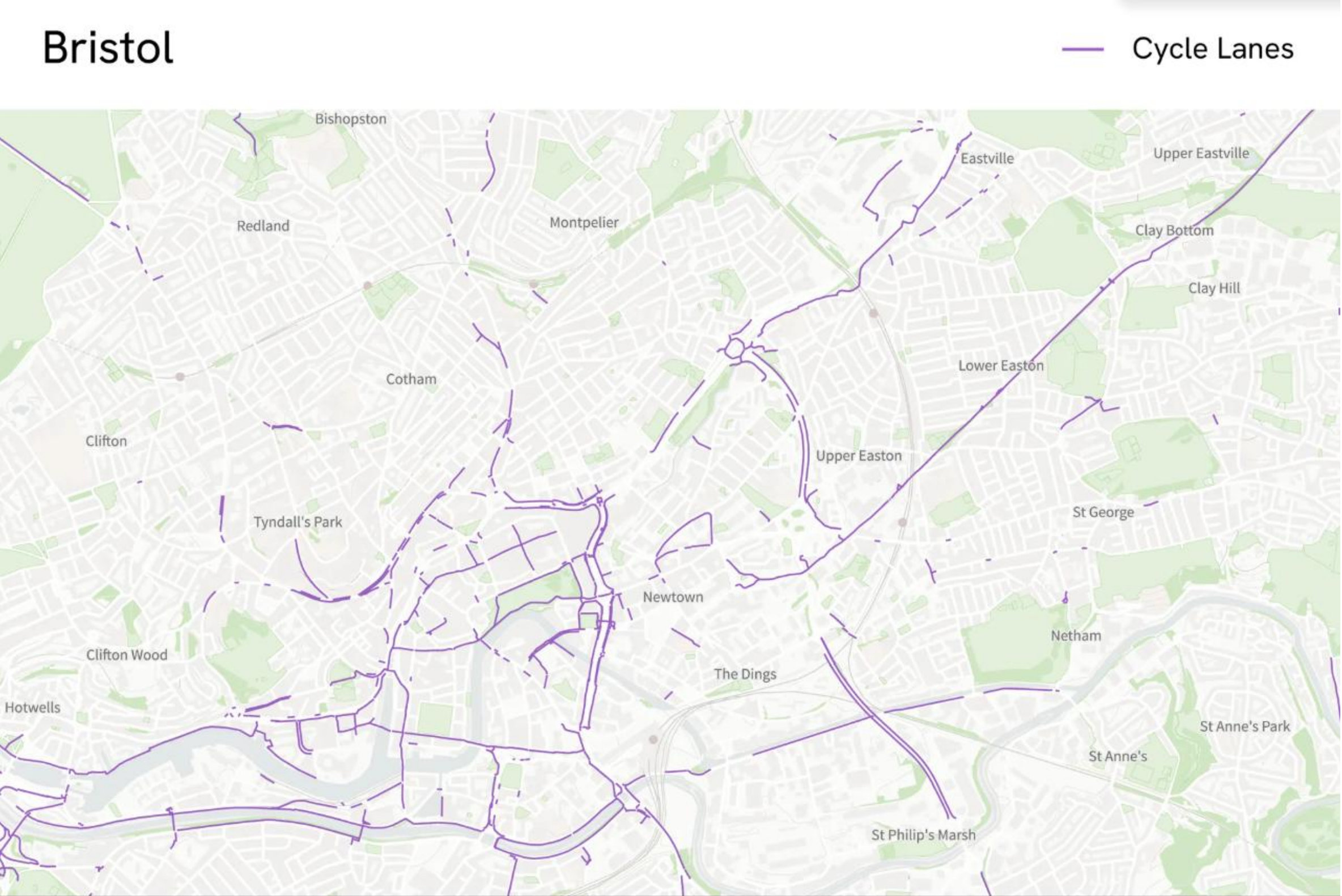


Giving 20 million people access to high-quality, safe routes in their communities



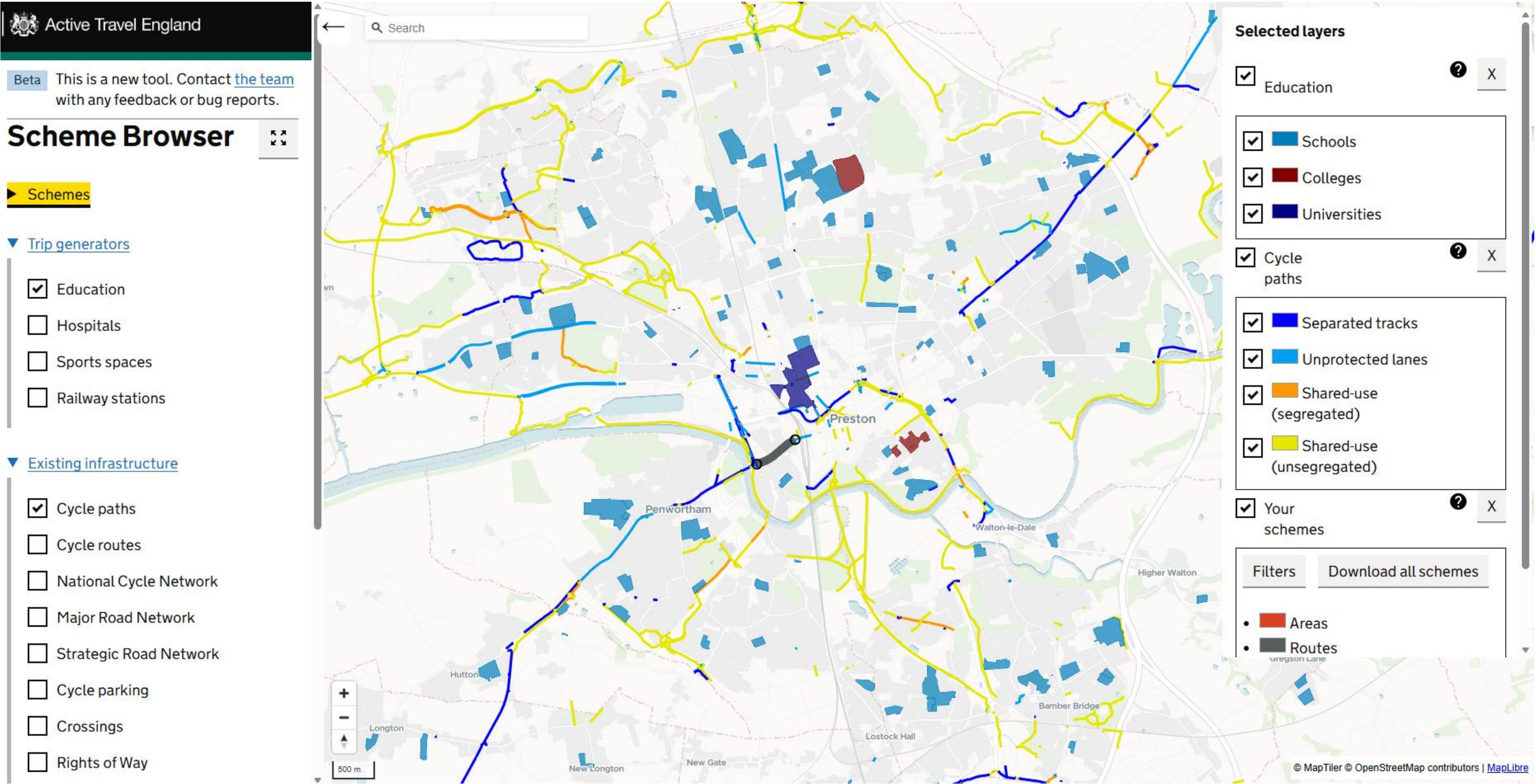
Giving 20 million people access to high-quality, safe routes in their communities

Bristol



ATE commissioned cycle lane and street lighting data sets to be produced by Ordnance Survey for local authorities to use to understand their existing networks

Giving 20 million people access to high-quality, safe routes in their communities



Understand local context
Look at local demand
Plan your scheme
Submit for design assistance

Plan Your Active Travel Scheme service allows authorities to plan their strategic networks, and specific schemes with local data (i.e. speeds, road widths, gradient, population, etc.)

Transform the school run by delivering safer routes in local neighborhoods



Building a healthy nation by embedding activity into everyday lives



Building a healthy nation by embedding activity into everyday lives

Morbidity Impacts of Active Mobility Appraisal Tool (MIAMAT)

Setup Appraisal | How much does Active Travel change? | Who is changing their Active Travel? | Which trips are shifting to Active Travel? | Results

Introduction

In this section you specify parameters which will define the location and level of detail of your appraisal.

Based on your inputs here, and throughout the application, health impacts will be estimated comparing the situation "before" the implementation of your intervention (sometimes referred to as "baseline", or "reference", or "no build" scenario) with the situation "after" implementation (referred to as "counterfactual", or "built").

Your inputs primarily inform the "counterfactual scenario", while the tool provides most information for the "reference scenario" based on background data.

By default, the tool shows "basic" options. You can choose to show "advanced" options in the panel to the right.

Select UI Mode

Choose between basic and advanced options:

- Basic (simplest path to results)
- Advanced (offers various optional refinements)

Geographic Scope

Select the geographic area of your appraisal:


- England
- Region
- Grouped LADs
- LAD
- MSOA

Mode Selection

Which active travel modes would you like to assess?

- Walking
- Cycling
- E-biking
- Walking to/from PT

Selected Area



Selected region will be highlighted on the map

- **New national health model**
- **Understands how walking, wheeling and cycling will impact on the health of different people**
- **Will help public health and transport offers work together to address health inequalities**
- **Helps authorities know where to target social prescribing**
- **Could reduce burden on NHS**



Active
Travel
England

Active Travel England

West Offices, Station Rise, York, YO1 6GA

gov.uk/government/organisations/active-travel-england

